

# School Mission

*St Patrick's College aspires to be a community based on Gospel values of love, forgiveness, compassion, respect, sensitivity and justice, expressed through the Catholic tradition.*

We strive to -

- Foster a deepening personal commitment to God
- Witness to Gospel values and the Christian way of life in our dealings with each other and the wider community
- Promote spiritual, intellectual, emotional, social and physical development
- Recognise and foster the talents and potential of each member of our College community.



**FOSTERING  
TALENT**

**PROVIDING  
CHALLENGE**

**PURSUING  
WISDOM**



**St Patrick's College**  
*Let your light shine*

2-12 CHURCH STREET, GYMPIE

P (07) 5482 3816

F (07) 5482 7972

E [sgympie@bne.catholic.edu.au](mailto:sgympie@bne.catholic.edu.au)

W [www.spcgympie.qld.edu.au](http://www.spcgympie.qld.edu.au)

## SCHOOL CONTACT PERSONNEL

**Principal** Karen Harrison

**Deputy** Lyn Nothdurft

**APA** Paula Elvy

**APRE** Timothy Malone

**Support Teachers (IE)**  
Rita Barber, Hayley Fletcher  
**Guidance Counsellor**  
Mark Jabore



**Brisbane Catholic  
Education Centre**

**Enrolment Application**

and

**Support Procedures**

for

**Students requiring Significant**

**Educational Adjustments**

## Introduction and Rationale

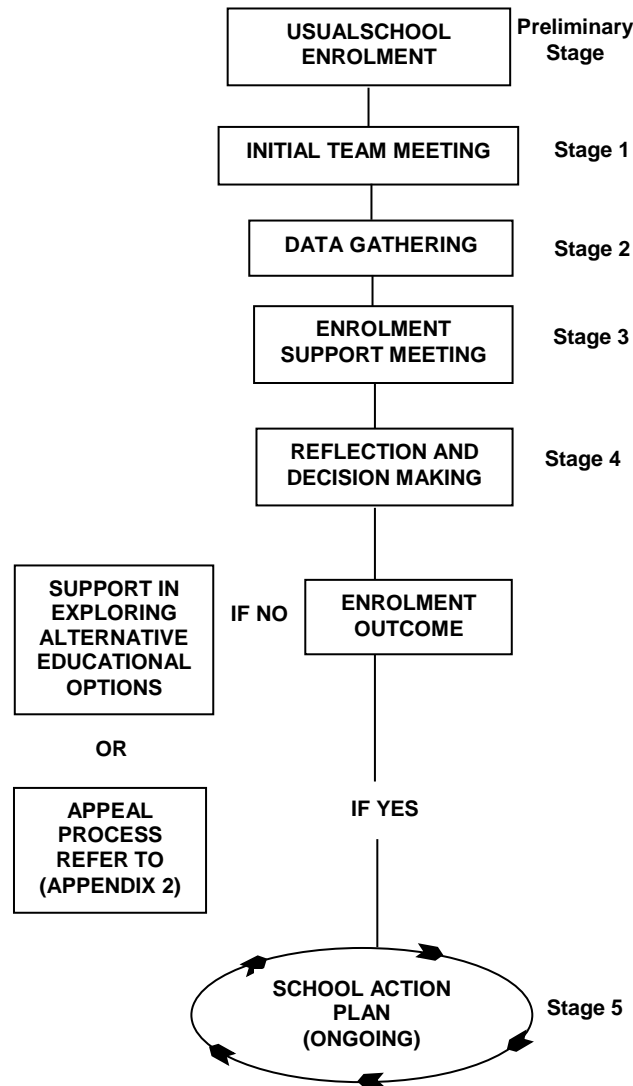
The Enrolment Application and Support Procedures for Students requiring Significant Educational Adjustments operates within the Policy – Students with Disabilities for Brisbane Catholic Education schools. This policy statement, consistent with the Vision Statement and Strategic Renewal Framework 2007-2011, reflects the ongoing commitment of Brisbane Catholic Education to the incorporation of inclusive practices in schools and is guided by the principles of justice as reflected with Church, education and legal areas. The enrolment of a student requiring significant educational adjustments is the concern of the whole school community within the church.

The process seeks to reveal and clarify the characteristics of the learner, and to assess the relevant adjustments for accessing the learning and the implications of these for the school, the family and the student.

A partnership approach is foundational to this process and leads to an appropriate response to the student's educational needs. The enrolment application and support procedures are used when it is considered likely that significant educational adjustments will be needed to support a student's initial enrolment and/or for ongoing service provision.



### ENROLMENT APPLICATION AND SUPPORT PROCEDURES For Students requiring Significant Educational Adjustments



### Preliminary Stage

- Make Application for Enrolment



### Stage 1 Parent Meeting

- **Student Enrolment Team meeting preparation**
- **Partnership Formed**



### Stage 2 Data Gathering

- **Observe/Collect Data**
- **Explore Needs**



### Stage 3 Enrolment Support Meeting

- **Examine Implications**
- **Partnership Strengthened**



### Stage 4 Reflection &

#### Decision Making

- **Principal Makes Decision**
- **Informs Relevant Others**



### Stage 5 School Action Plan

- **Plan Action as Necessary**
- **Ongoing program monitoring & Review of adjustments**
- **Returning to Stage 2 (if necessary)**